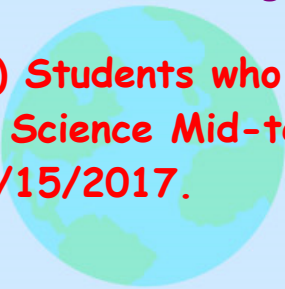


Plan of the Day:

1) Interpreting the Geologic Time Scale Lab (3 pages)

2) Continue/Finish: READ & ANSWER QUESTIONS Unit 2: Lessons 1 through 4.

3) Students who have NOT done RECOVERY for the Grade 6 Science Mid-term MUST start to do so before 2/15/2017. SEE ME for details!



Unit 2 Disciplinary Core Ideas

ESS2.A: Earth's Materials and Systems

- All Earth processes are the result of energy flowing and matter cycling within and among the planet's systems. This energy is derived from the sun and Earth's hot interior. The energy that flows and matter that cycles produce chemical and physical changes in Earth's materials and living organisms.

ESS1.C: The History of Planet Earth

- Tectonic processes continually generate new ocean sea floor at ridges and destroy old sea floor at trenches. (HS.ESS1.C.GBE),(secondary)

ESS2.B: Plate Tectonics and Large-Scale System Interactions

- Maps of ancient land and water patterns, based on investigations of rocks and fossils, make clear how Earth's plates have moved great distances, collided, and spread apart.

Feb 10-2:49 PM

Today's lab, Interpreting Geologic Time Scale is two (2) parts. PART 1:

Name: _____ Class: _____ Date: _____

Interpreting the Geologic Time Scale

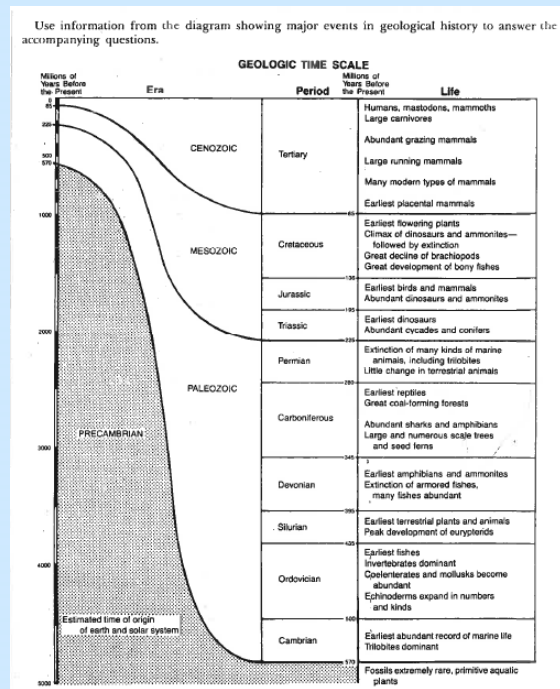
What were the earliest forms of life?

Using the chart, predict what trilobites ate. Explain your reasoning.

During what period and era did the dinosaurs become extinct?

Fossils from the Precambrian Era are extremely rare. Provide two (2) reasons for this observation.

A beautiful fossil of a never-before seen bird was discovered. Scientific data using the half-life of uranium-235 (U-235) showed it to be from the Triassic period of the Mesozoic Era. The paleontologist who discovered the fossil was being honored at the Smithsonian Institute. In the middle of his speech, you jump up and yell, "It's a fake and I can prove it." PROVE IT below!



Feb 10-2:55 PM

Today's lab, Interpreting Geologic Time Scale is two (2) parts. PART 2:

Name: _____ Class: _____ Date: _____

History of the Earth Sequencing Activity

1. Color your 8 life samples and cut them out. ©
2. Use your History of the Earth timeline diagram to place each life form IN ORDER of when it appeared.
3. DOUBLE CHECK before you glue them down.
4. On this sheet, write the NAME of the life form, the ERA and the PERIOD it appeared in the fossil record for each of the 8 blocks.

Name: _____ Era: _____ Period: _____	1st (earliest)
Name: _____ Era: _____ Period: _____	2nd
Name: _____ Era: _____ Period: _____	3rd
Name: _____ Era: _____ Period: _____	4th

Name: _____ Era: _____ Period: _____	5th
Name: _____ Era: _____ Period: _____	6th
Name: _____ Era: _____ Period: _____	7th
Name: _____ Era: _____ Period: _____	8th (most recent)

Feb 13-6:59 AM

Trilobites: a fossil group of extinct marine arthropods that form the class Trilobita. Trilobites form one of the earliest known groups of arthropods.



Brachiopods: Brachiopods, phylum Brachiopoda, are a group of lophotrochozoan animals that have hard "valves" on the upper and lower surfaces, unlike the left and right arrangement in bivalve molluscs.



Precambrian: Oldest dated algae, over 2,600 million years.



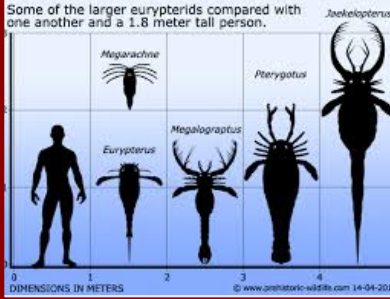
Ammonites: Ammonoids are an extinct group of marine mollusc animals in the subclass Ammonoidea of the class Cephalopoda.

Feb 13-10:28 AM

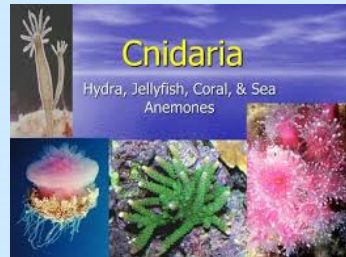
Cycads: are seed plants with a long fossil history that were formerly more abundant and more diverse than they are today.



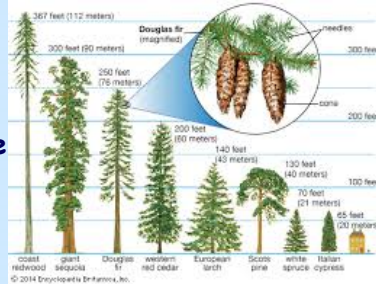
Eurypterids: an extinct group of arthropods related to arachnids that include the largest known arthropods to have ever lived.



Coelenterates: any invertebrate of the phylum Cnidaria, having a saclike body with a single opening (mouth), which occurs in polyp and medusa forms. Coelenterates include the hydra, jellyfishes, sea anemones, and corals.



Conifers a tree that bears cones and evergreen needlelike or scale-like leaves. Conifers are of major importance as the source of softwood, and also supply resins and turpentine.



U-235 Halflife = 700 million years.

Feb 13-11:00 AM

For PART 2, you will find the Unit 2 readings very helpful especially **Lessons 2: Relative Dating & Lesson 3: Absolute Dating.**

Each student will receive an additional sheet that has 8 organisms to sequence using the graphic in Part 1.

BOTH handouts are due at the end of the period. Place in the **BLUE MORIN BIN** assuring your **NAME, CLASS** and **DATE** are on **EACH** page.

Assignments **NOT** completed during class become **STUDENT-ASSIGNED HOMEWORK** due as you walk into your **NEXT** science class (**2/15, A-day & 2/16, B-day**).

Feb 13-7:01 AM

Recovery Started /NOT Started

12A: Lilly

36A Leah

78A Maddie, Brianna

12B Laila

36B Maxwell, Lou Lou, Tim

78B Marcell



Recovery NOT
STARTED by
February 15
will NOT BE
ALLOWED!
You MUST
come during
HR period.

Feb 13-7:23 AM